



## FUKE MATERIAL HANDLING MACHINE

安徽福客重工有限公司  
Anhui Fuke Heavy Industry Co., Ltd.

website: [www.sfuke.com](http://www.sfuke.com)

whatsapp: +8613505697380

Address: Room 405, Building B-4, East Side  
of Dazhong Road, Cuozen Town, Feidong  
County, Hefei City, Anhui Province

## FUKE MATERIAL HANDLING MACHINE

It is widely used in major steel mills, ports, yards, enterprise storage centers and other places to complete the loading and unloading of scrap and bulk goods, stacking operations, but also for material grabbing, lifting, cutting and other operations, including energy-saving control technology, hydraulic linkage technology, anti-tipping protection technology, automatic fault detection and real-time data display technology, with excellent overall performance. The whole machine performance, product safety and reliability, energy saving and high efficiency, can fully meet the needs of customers. Translated with [www.DeepL.com/Translator](http://www.DeepL.com/Translator) (free version)

# FK-ZG22



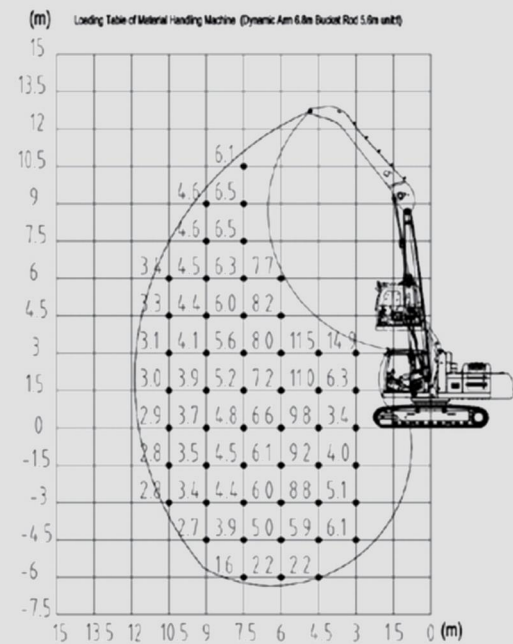
QUALITY CHANGES THE WORLD.



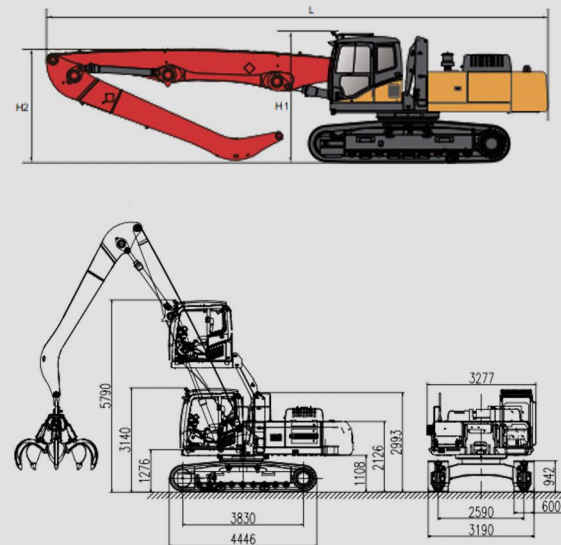
# CONFIGURATION PARAMETER

Power System	Engine	Model	Cummins
		Maximum power	180KW/2000rpm
		Maximum torque	1200N.m/1300rpm
		Emissions	National IV
Traveling device		Fuel tank volume	465L
		Working gauge	2590mm
		Wheel spacing	3830mm
		Track width	600mm
Hydraulic system		Max. travel speed	5km/h
		Control type	Electronically controlled positive flow system
		Main Pump	Model Rexroth
		Rated flow rate	2×260L/min
Slewing mechanism		Main Valve	Kawasaki
		Speed Reducer	Soter
		Boom cylinder	Hengli
		Bucket rod cylinder	ZTE
Maneuvering room		Maximum system pressure	34.5MPa
		Hydraulic oil tank	230L
		Slewing support	Soter
		Maximum rotation speed	8rpm
Basic parameters of the operation		Liftable height	2650mm
		Boom configuration	12m
			Moving arm: 6.8m
			Bucket bar: 5.6m
		Maximum operating radius	10.5m
		Maximum working height	10.5m
		Maximum operating depth	-6m
		Theoretical load at maximum radius	3.4t

# SCOPE OF WORK



# DIMENSION DIAGRAM



# Optional parameters

