

FK FUKU 福客®

FUKU

**Boutique Manufacturing,
Conquer The World With Quality**

FK-950G

进 取 不 止



*We follow the principle of continuous improvement Product performance parameters will be partially changed due to technical improvements without prior notice.

Anhui FUKU Heavy Industries Ltd.

web: www.sfuku.com

Basic Parameters ●

Bucket capacity: 3m³

Rated load: 5000 kg

Wheel base: 3200 mm (D)

Wheel Tread: 2250 mm

Min. ground clearance: 430mm

Max. dumping height: 3150 mm

Dump distance: 1080mm

Total times: 11s

Operation weight: 16500kg

Rated power/ speed: 162 kw/2200 rpm

Tyre: 23.5-25

Dimension (L*W*H): 7920*3050*3400 mm (A*B*C)

Comfortable operation

Safe performance

Strong bearing

Driving comfort

Easy maintenance

Reliable structure

Excellent efficiency

Booster

Car air conditioner

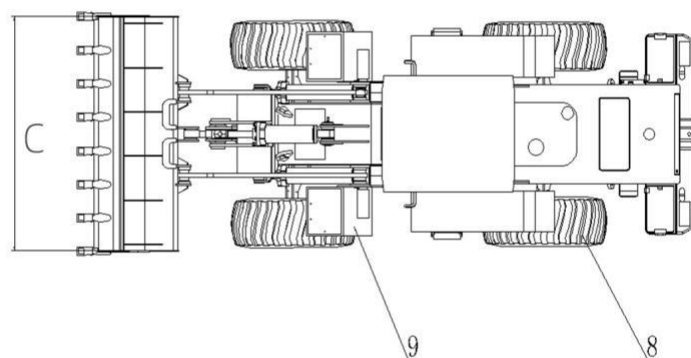
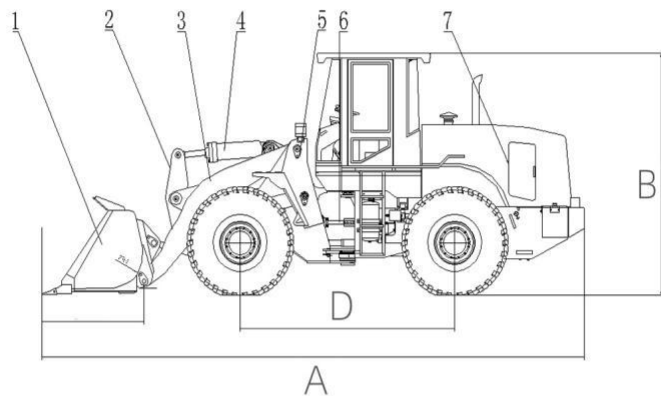
Protective Device

GPS positioning

On-board repair tools

CD Player

Loader Outline ●



Accessories ●



*We follows the principle of continuous improvement Product performance parameters will be partially changed due to technical improvements without prior notice.

web: www.sfuke.com

whatsapp: +8613505697380

Address: Room 405, Building B-4, East Side of Dazhong Road, Cuozhen Town, Feidong County, Hefei City, Anhui Province

web:

www.sfuke.com

Type 1 Mechanical Operating System



Type 2 Pilot Operating System



Type 3 Advanced Operating Systems

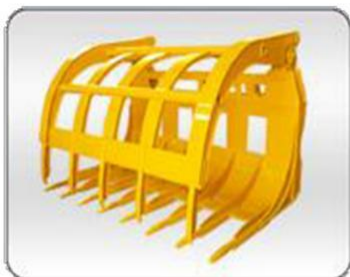
(Pilot and Image Operating Systems)



*We follows the principle of continuous improvement Product performance parameters will be partially changed due to technical improvements without prior notice.

Loader accessories ●

▼ Grass cutter



▼ Clamping machine



▼ Sliding fork



▼ Flat fork



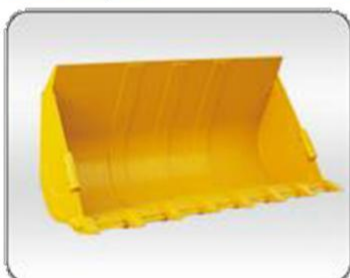
▼ Coal scuttle



▼ Side dump



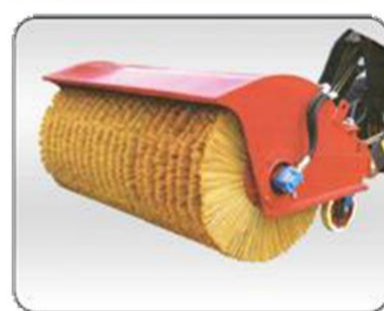
▼ Rock bucket



▼ Breaker



▼ Snowplow



▼ Snow shovel



▼ Quick change tooling



*We follow the principle of continuous improvement Product performance parameters will be partially changed due to technical improvements without prior notice.