

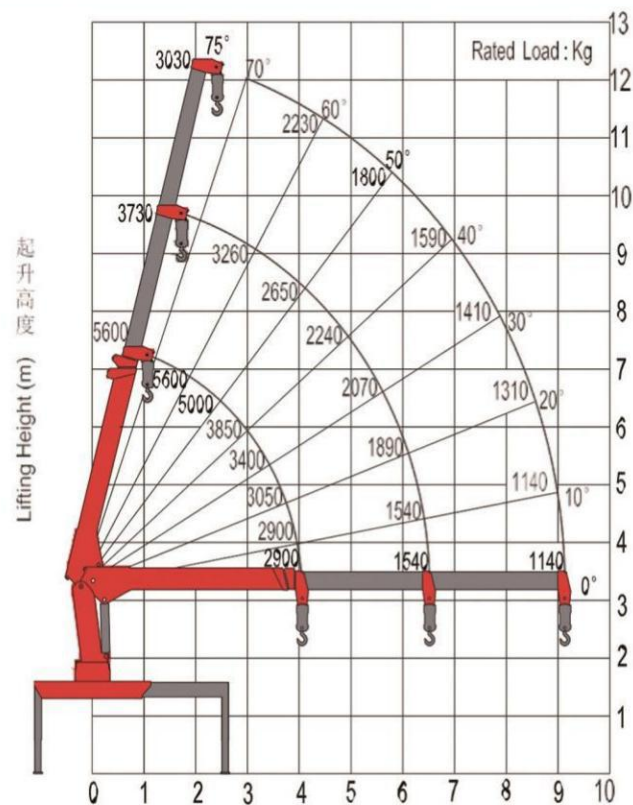
FK-50T



> Product Description

- Extra-long boom, wider operating range
- Two-stage large-span outriggers have stronger overall machine stability
- The fuel tank is integrated on the base, making it easier to modify. High safety factor design, higher reliability, standard warning horn. Standard work light
- Standard high pressure filter
- Standard configuration winch over-winding alarm
- The standard plunger pump has longer life, higher efficiency and higher reliability
- Optional hydraulic or manual outrigger
- Optional innovative low seat, which is more in line with humanized operation and enhances comfort

> Lifting Performance Graph



NOTE

The above lifting height and boom angles are based on a straight (unladen) boom. Allowance should be made for boom deflection under laden conditions.



> Technical Parameters